

LUMIEN FLOOD LIGHTS, QUANTITY 5 FLOOD LIGHTS,
LOW VOLTAGE WIRE RUN APPROXIMATELY 190' TO
NEW TRANSFORMER LOCATED AT POOL EQUIPMENT

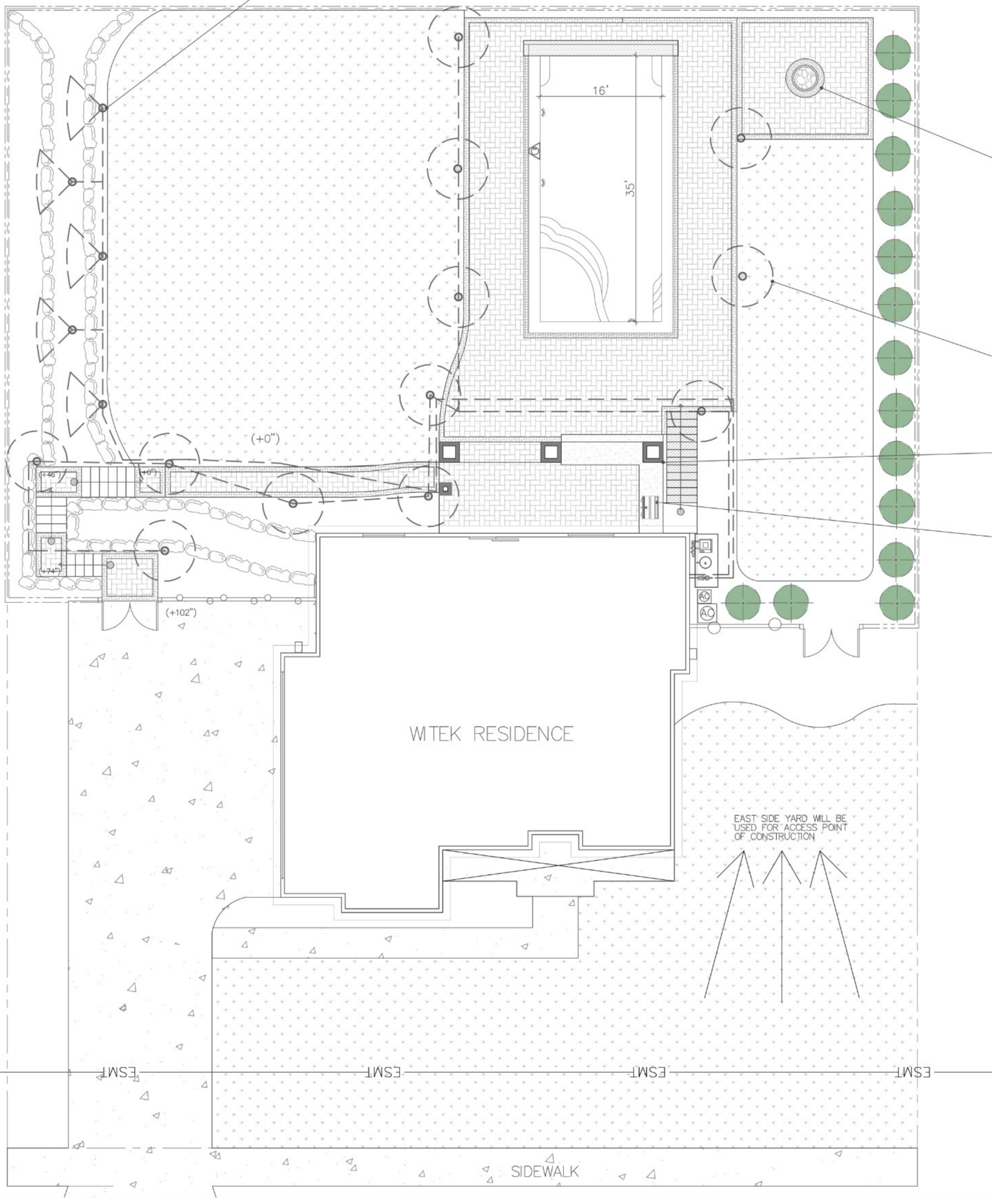
FIRE PIT STRIP ACCENT LIGHT UNDER THE
CANTILEVER OF CAP - TOTAL RUN 16' LONG

LUMIEN AREA LIGHTS, QUANTITY 12 AREA LIGHTS,
LOW VOLTAGE WIRE RUN APPROXIMATELY 260' TO
NEW TRANSFORMER LOCATED AT POOL EQUIPMENT

ADD 2 ELECTRICAL OUTLETS BY PILLAR (ONE FOR
NEW TV LOCATION AND ONE FOR UV SPACE HEATER)

KITCHEN ISLAND STRIP ACCENT LIGHT UNDER THE
CANTILEVER OF GRANITE COUNTERTOP - TOTAL RUN
45' LONG (SUBTRACTING THE WALL AND PILLAR SIDE)

EAST SIDE YARD WILL BE
USED FOR ACCESS POINT
OF CONSTRUCTION



ESMT

ESMT

ESMT

ESMT

SIDEWALK